

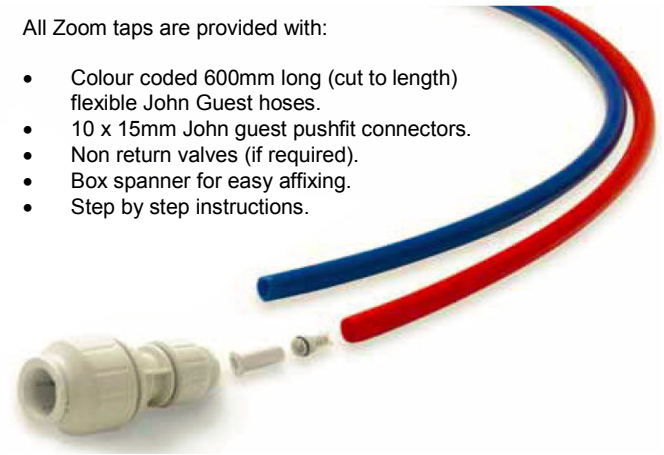
**Product Finish:** Brushed Nickel

**Product code:** ZP1055  
**EAN13 barcode:** 5060344151375

**Product features:**

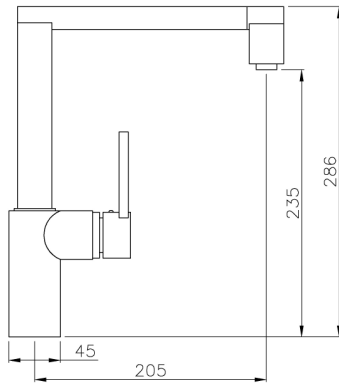
All Zoom taps are provided with:

- Colour coded 600mm long (cut to length) flexible John Guest hoses.
- 10 x 15mm John guest pushfit connectors.
- Non return valves (if required).
- Box spanner for easy affixing.
- Step by step instructions.



**Additional information / Parts included:**

2mm a/f Allen key included, dual fixing studs, head tilts 30°



- **Overall Height / projection:** 286 mm
- **Exit reach:** 205 mm
- **Exit height:** 235 mm
- **Centre distance(s):**

- **Base diameter(s):** 45 mm
- **Recommended hole diameter:** Ø 35 mm
- **Max. surface depth:** 45 mm

- **Spout diameter:** n/a mm
- **Spout aerator size:** 18mm

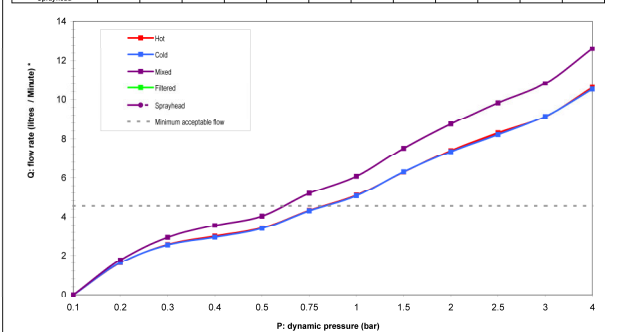
**Box length:** 420mm

**Box depth:** 75mm

**Box width:** 240mm

**Boxed weight:** 3.24kg

Flow path	Dynamic working pressure (bar)												
	0.1	0.2	0.3	0.4	0.5	0.75	1	1.5	2	2.5	3	4	
Hot	0	1.51	2.59	3	3.42	4.22	5.09	6.3	7.41	8.25	9.14	10.2	
Cold	0	1.62	2.64	2.94	3.4	4.3	5.05	6.31	7.36	8.22	9.15	10.52	
Mixed	0	1.75	2.93	3.36	4.04	5.18	6.08	7.53	8.75	9.83	10.82	12.62	
Filtered													
Sprayhead													



note 1:   
 note 2:   
\*Flow rate data shown is correct at the time of testing, we reserve the right to amend specification without prior notice.

- **Min / Max water pressure:** 0.75 / 5.5 bar
- **Recommended / Max water temperature:** 46°C / 70°C
- **Part G - Mixed flow rate at 3 bar (litres / min):** 10.82

- **Control valve type:** Single lever ceramic cartridge
- **Product flow characteristics:** Single flow
- **Non return valve(s):** Hot & cold (integral to tails)

- **Aerator type:** Plastic mesh diffuser & flow straightener
- **Accepts revolve / spray areator:** No
- **Spout connection method:** Grub screw

- **Tail pipe inlet / outlet size:** M10 / 1/2" BSP Male
- **Inlet pipe type / length:** flexible stainless braided hose / 270 mm

**Care instructions summary:**

- Clean the mixers and showers regularly as required, using soap, do not use any other cleaners.
- Regular cleaning will prevent the build up of lime scale and dirt
- After cleaning rinse thoroughly with clean water to remove any cleaner residue
- Residues of sink & worktop cleaners can also cause damage, so rinse with clean water after using, avoid contact with any abrasives

**Warranty Summary** (Full details available on request):

- Materials and workmanship defects warranted for 5 years
- Valves and working parts warranted for 5 years
- Surface warranty defects warranted for 1 year
- O-rings, hoses & gaskets warranted for 1 year